

# Optimage Configuration

Andreas Jahnen, Johannes Hermen, Christian Moll

September 4, 2009



# Contents

<b>1</b>	<b>Configuration</b>	<b>5</b>
1.1	Settings	5
1.2	Edit Institution	6
1.3	International	6
1.4	Module Manager	8
1.5	Settings: DICOM / PACS	8
1.5.1	FILE Input:	8
1.5.2	DICOM Dir. / CD:	9
1.5.3	DICOM STORE (SCU):	9
1.5.4	DICOM QUERY (C-Find):	9
1.5.5	DICOM SEND (SCP):	9
1.5.6	Configure DICOM Header Preview:	9
1.6	Database	11
1.7	Import/Export	13
1.8	Startup Options	13
1.9	Logging	15



# Chapter 1

## Configuration

### 1.1 Settings


You can change the settings of the Optimage Software Package using the Edit → Options menu entry, the shortcut

Alt-O or this  toolbar button:



Please consult the following sections for further information and the available options:

- International
- Module Manager

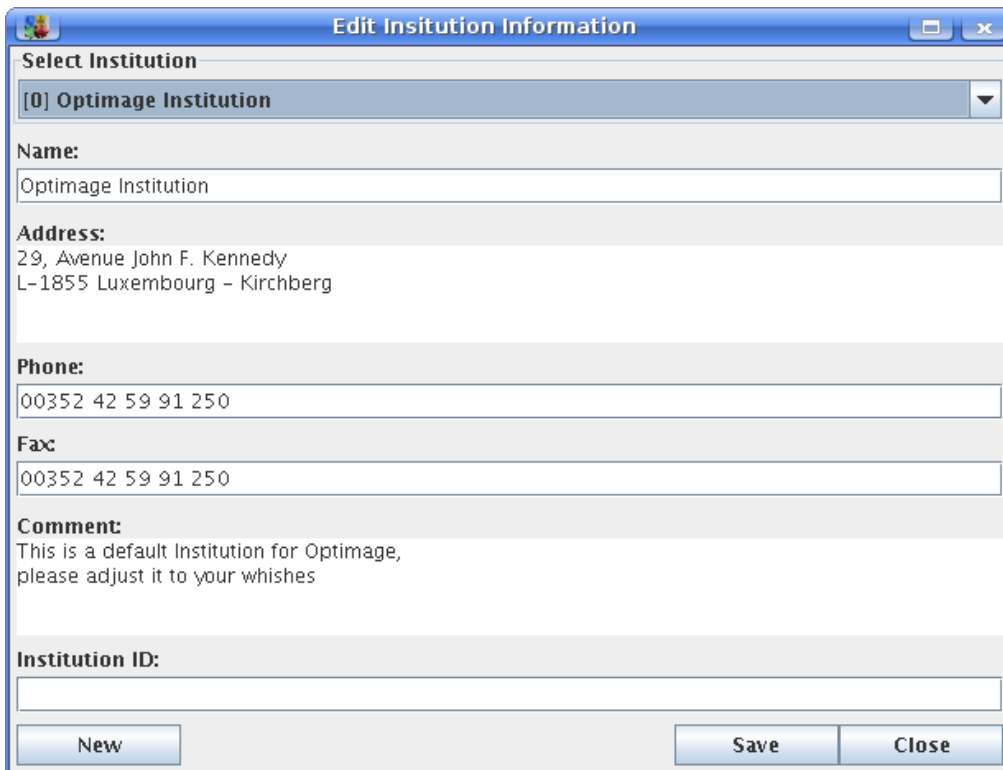
- DICOM / PACS
- Database
- Import/Export
- Startup Options
- Logging 

With the Apply or Ok buttons you are able to save the settings, the Cancel button revokes the changes. If the specific module contains defaults, they can be set then with the Defaults button.

## 1.2 Edit Institution

Optimage provides the possibility to manage Profiles of different institutions, e.g. you have to manage facilities at

different hospitals. To setup an institution use the  toolbar button.



**Select Institution**  
[0] Optimage Institution

**Name:**  
Optimage Institution

**Address:**  
29, Avenue John F. Kennedy  
L-1855 Luxembourg - Kirchberg

**Phone:**  
00352 42 59 91 250

**Fax:**  
00352 42 59 91 250

**Comment:**  
This is a default Institution for Optimage,  
please adjust it to your wishes

**Institution ID:**

New Save Close

Be sure to save the changes!

## 1.3 International

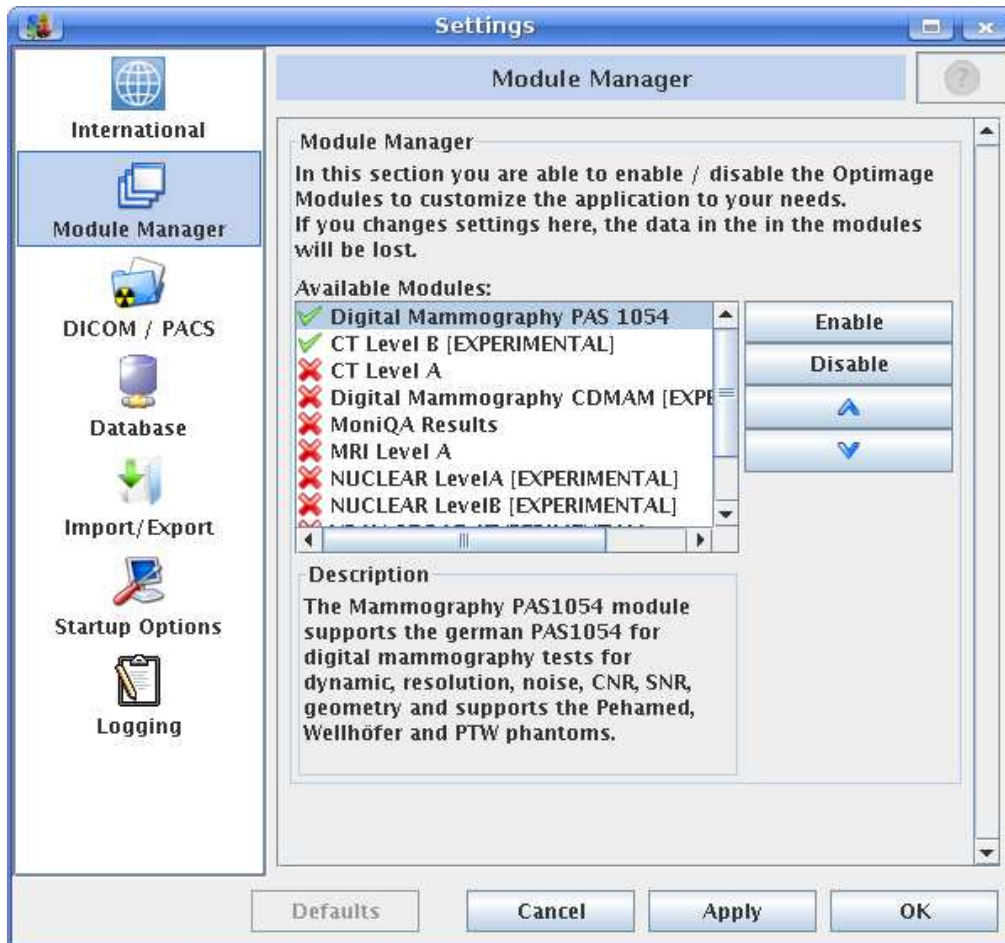
In this section you can change the language of the application. Please select your preferred language.



The complete user interface is translated. The calculation results are not translated and they remain in English.

## 1.4 Module Manager

The Optimage Framework consists of several modules. Depending on your needs, you are able to enable or disable the available modules. This allows you to change the complexity of the application and the required system resources as well. If you select a module in the list, you will get a short description what you can do with it. A more complete description including phantom requirements and features is available in the help system.



The Module Manager contains a list of available modules, together with a indication if they are enabled or disabled. You can enable and disable the selected module with the Enable and Disable buttons. Sorting of the modules is possible with the up and down arrows.

## 1.5 Settings: DICOM / PACS

For Optimage it is important to access images from different sources. If you do not use one of the methods, you can disable that method. Besides the file system, a interaction with DICOM enabled devices is also possible. Additionally a DICOMDIR support, for example to read CDs created in hospitals, is also available. All this settings will manipulate the File → Open Action in Optimage. This method is unique for all modules.

The configuration dialogue is - according to the differnet image acquisition methods separated into three categories:

### 1.5.1 FILE Input:

You can preselect here a hard disc folder in that your DICOM Files are located. It will be preselected in the File Chooser.

### 1.5.2 DICOM Dir. / CD:

You can specify a DICOMDIR File location here. This file will be examined to find information about the DICOM Files. It is maybe useful, that you configure your CD ROM drive here. This will enable you to read DICOM CDs created by robots often present in hospitals.

For DICOM Dir. / CD and File Input, you can alternatively enter a shared folder. If you do this be carefully and check if the folder exists for every client.

### 1.5.3 DICOM STORE (SCU):

If you enable this module a small, fast local PACS<sup>1</sup> system will be started within Optimage. You are then able to receive images via DICOM MOVE. To fully enable this you need to configure your DICOM Nodes to be able to send images to this new Optimage DICOM node. Your DICOM / PACS<sup>1</sup> Administrator knows how to do it 😊. The values to configure are: DICOM Store: The location, where the PACS<sup>1</sup> server should save the images and the DICOM Information. AET<sup>2</sup> Name: This is an indicator for the DICOM Node and describes the node. This has to match the configuration in the other DICOM Nodes to enable communication. Port: The port number on that the DICOM server should listen. Note: you need Administrator rights to enable ports smaller than 1024. Often used ports are: 104 and 5104.

### 1.5.4 DICOM QUERY (C-Find):

You can Query an external PACS<sup>1</sup> via DICOM C-FIND and move the selected images to your local DICOM STORE via DICOM MOVE Address: The IP Address of the queried DICOM Node. This can be a DNS<sup>3</sup> Name as well as a numerical IP address. Port: The port number of the queried DICOM Node. Called AET<sup>2</sup>: The AET<sup>2</sup> of the queried DICOM Node. Move Dest.: The AET<sup>2</sup> of the DICOM STORE you want to move the images to. The AET<sup>2</sup> must be configured with its address and port in the queried server.

### 1.5.5 DICOM SEND (SCP):

Optimage provides also a way to send DICOM files to other DICOM Nodes (like a PACS<sup>1</sup>). You can configure this in the section DICOM SEND (SCP). The following options need to be configured: Calling AET<sup>2</sup>: The AET<sup>2</sup> identification of the sending (this is Optimage) DICOM Node. Address: The IP Address of the receiving DICOM Node. This can be a DNS<sup>3</sup> Name as well as a numerical IP address. Port: The port number on that the receiving DICOM server. Called AET<sup>2</sup>: The AET<sup>2</sup> of the receiving DICOM Node.

### 1.5.6 Configure DICOM Header Preview:

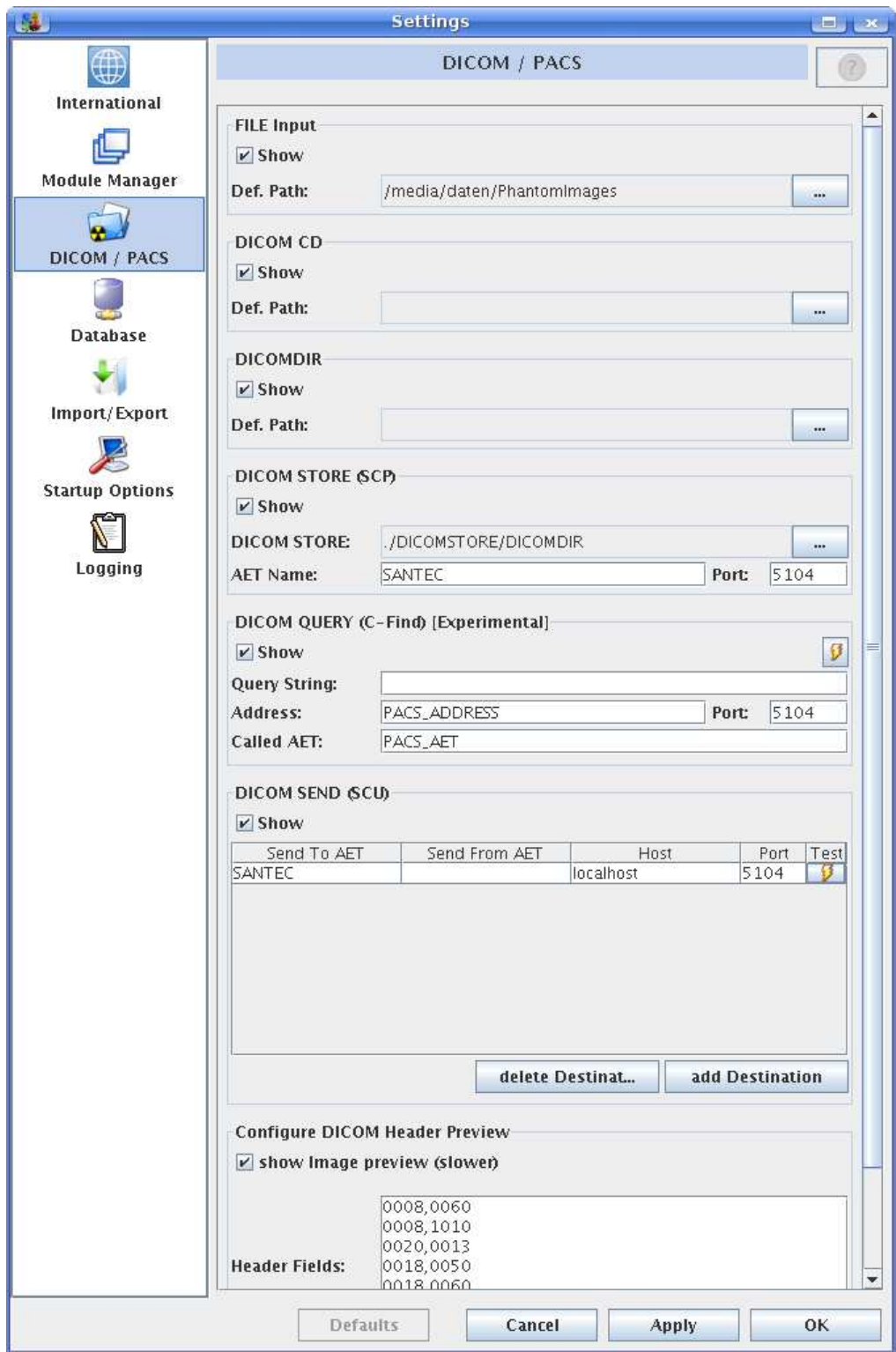
You can change the DICOM Header fields shown in the DICOM Preview Info Enter all the Header DICOM Tags (e.g. 0008,0060 for Modality) you want to see in the preview. A complete list of all Tags can be found by selecting an image and using the “show DICOM Header” button in the open Dialog.

---

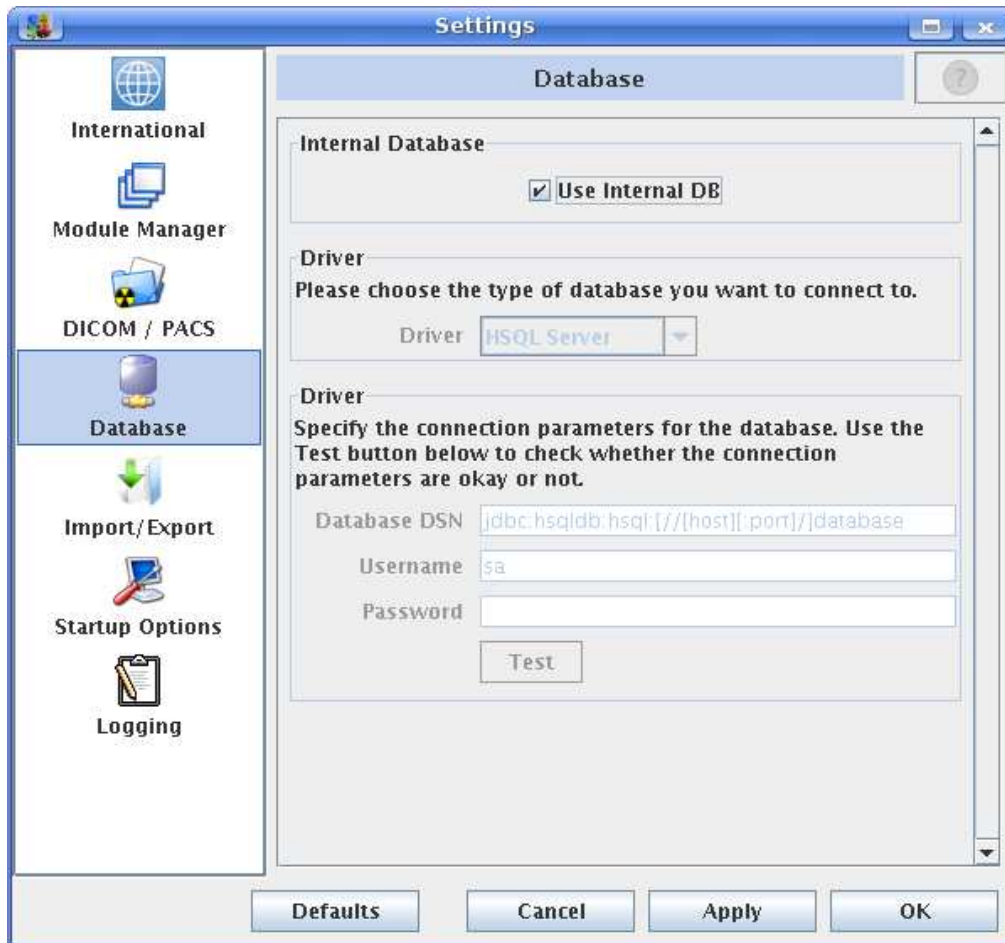
<sup>1</sup>Picture Archiving and Communication System

<sup>2</sup>Application Entity Title

<sup>3</sup>Domain Name Server



## 1.6 Database

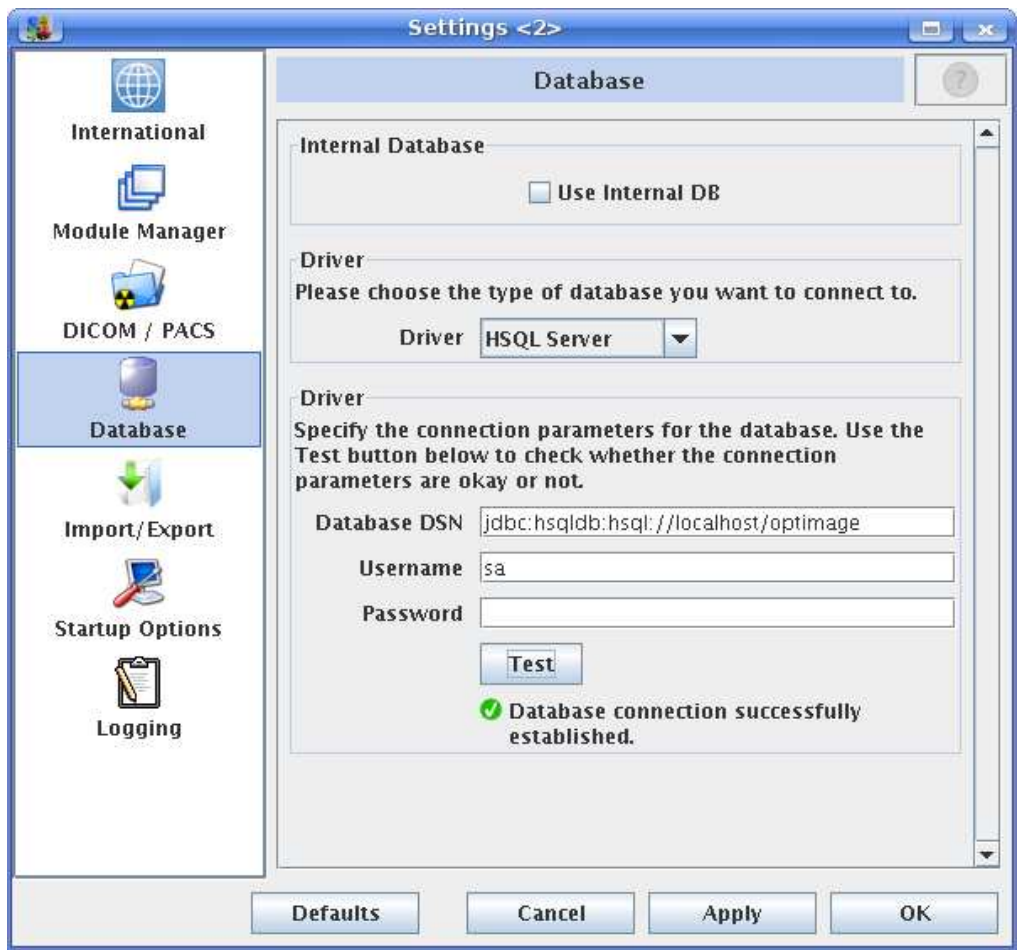


By default Optimage uses its build-in HSQL based database. You can also connect to a running Optimage or external database. Therefore choose the to connect database driver. And set up the driver settings.

To test a connection use the 'Test'-Button. You will get a feedback from the settings dialog.

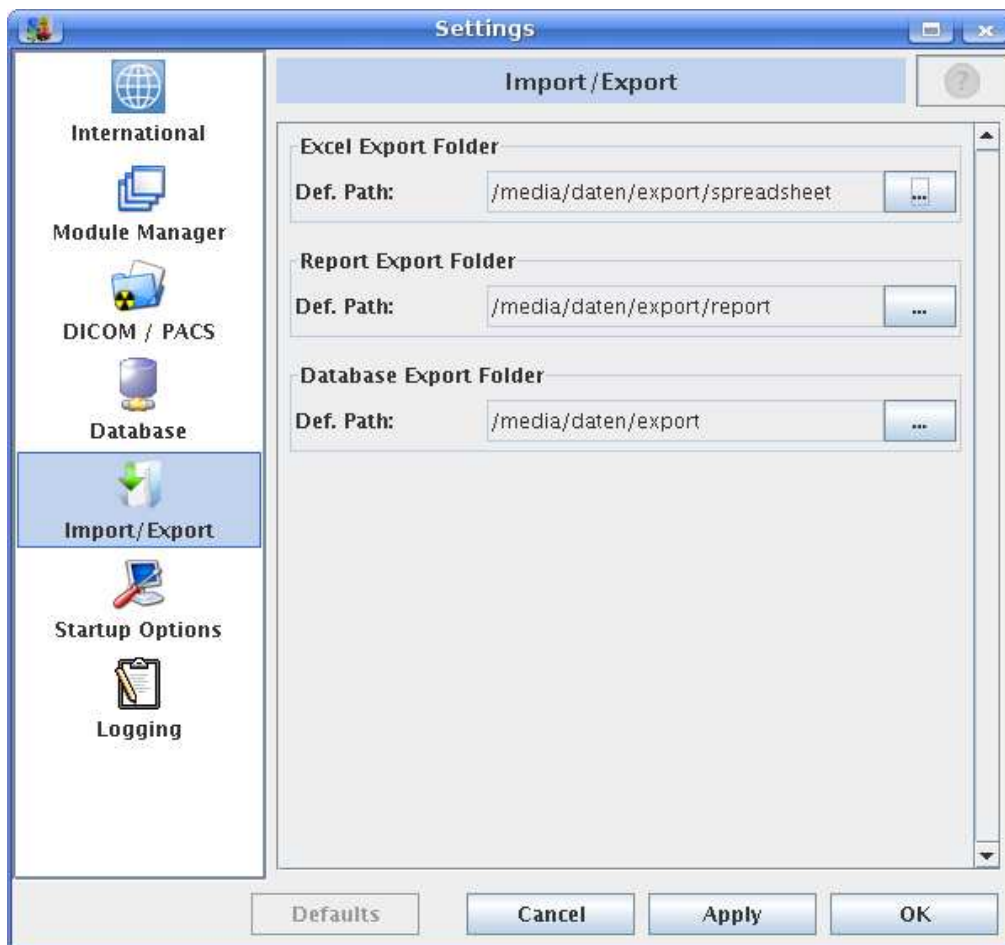
If a instance of Optimage is used to provide a database the standard properties are:

Database DSN	jdbc:hsqldb:hsqldb://host/optimage
Username	sa
Password	



## 1.7 Import/Export

These settings gives you the possibility to define the destination paths for Excel, PDF<sup>4</sup> and the database export.



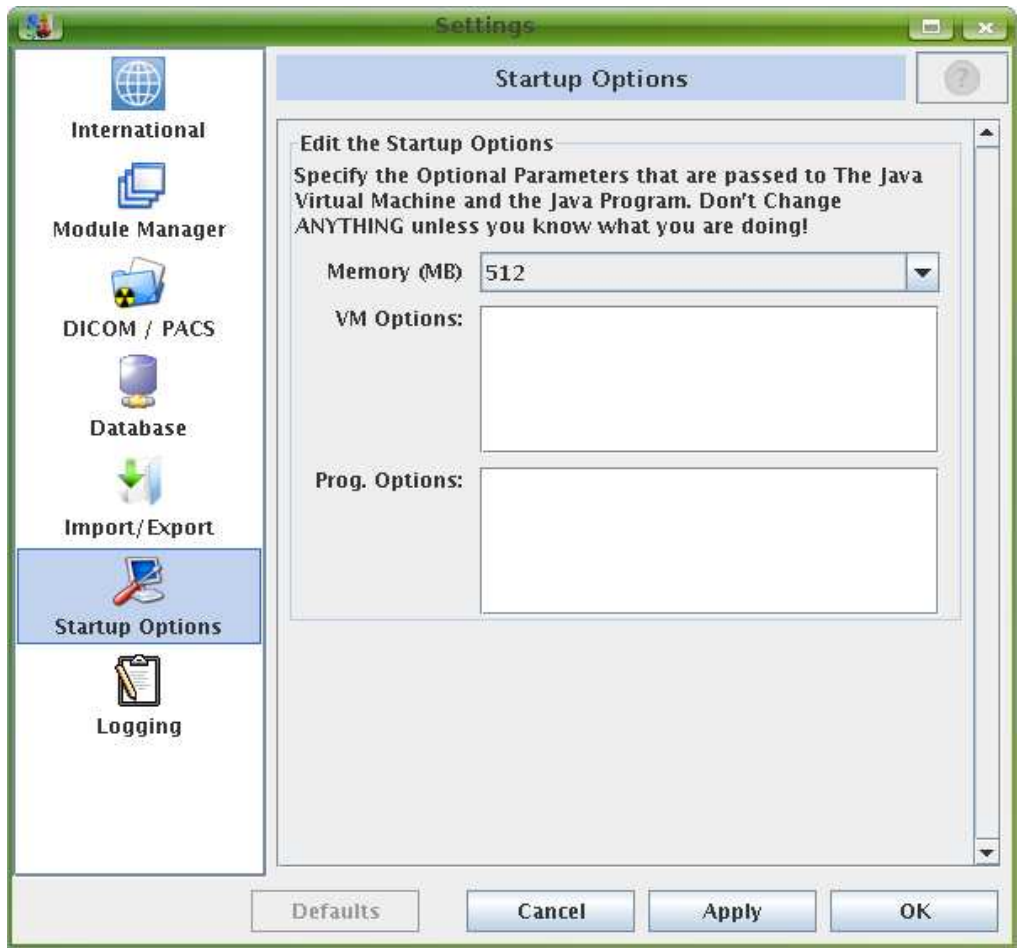
## 1.8 Startup Options

Here you can define the amount of memory for Optimage, you can define options for the Java Virtual Maschine and Optimage itself.

Parameter	Optimage startup options
h	prints the help
p	Starts Optimage without GUI <sup>5</sup> as a DICOMstore
x	Stops a running Optimage DICOMstore
d	Starts Optimage without GUI <sup>1</sup> as a database
q	Stops a running Optimage database

Optimage startup options can also be combined, e.g. -pd starts Optimage without GUI<sup>1</sup> as DICOMstore and database.

<sup>4</sup>Portable Document Format



## 1.9 Logging

Optimage provides different methods to log events.

