

# Optimage Installation and update

Christian Moll, Johannes Hermen, Andreas Jahnen

September 7, 2009



# Contents

<b>1</b>	<b>Installation and Update</b>	<b>5</b>
1.1	Standalone Installation . . . . .	5
1.2	Client-Server . . . . .	5
1.3	Update . . . . .	7
1.4	Update the DICOMSTORE . . . . .	8
1.5	Run Optimage as a service . . . . .	9
1.5.1	Server (Service) Configuration . . . . .	9
1.6	Startup Options . . . . .	10



# Chapter 1

## Installation and Update

### 1.1 Standalone Installation

Optimage installation is done by a wizard, so you'll only find some hints in here.

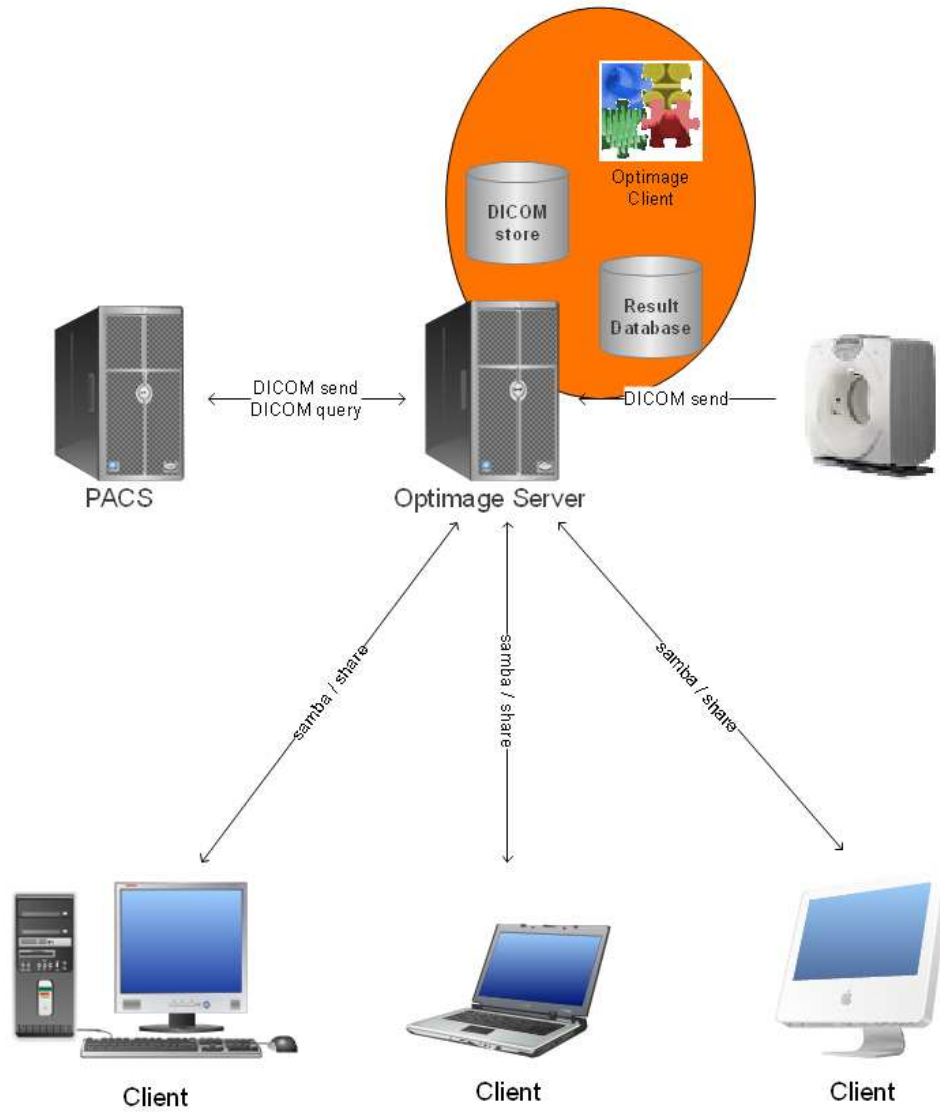
1. Call the installation folder OptimageXXX (XXX - Version Number without dots, 153 for the Version 1.5.3), this will avoid to loose acquired data during a later update.

### 1.2 Client-Server

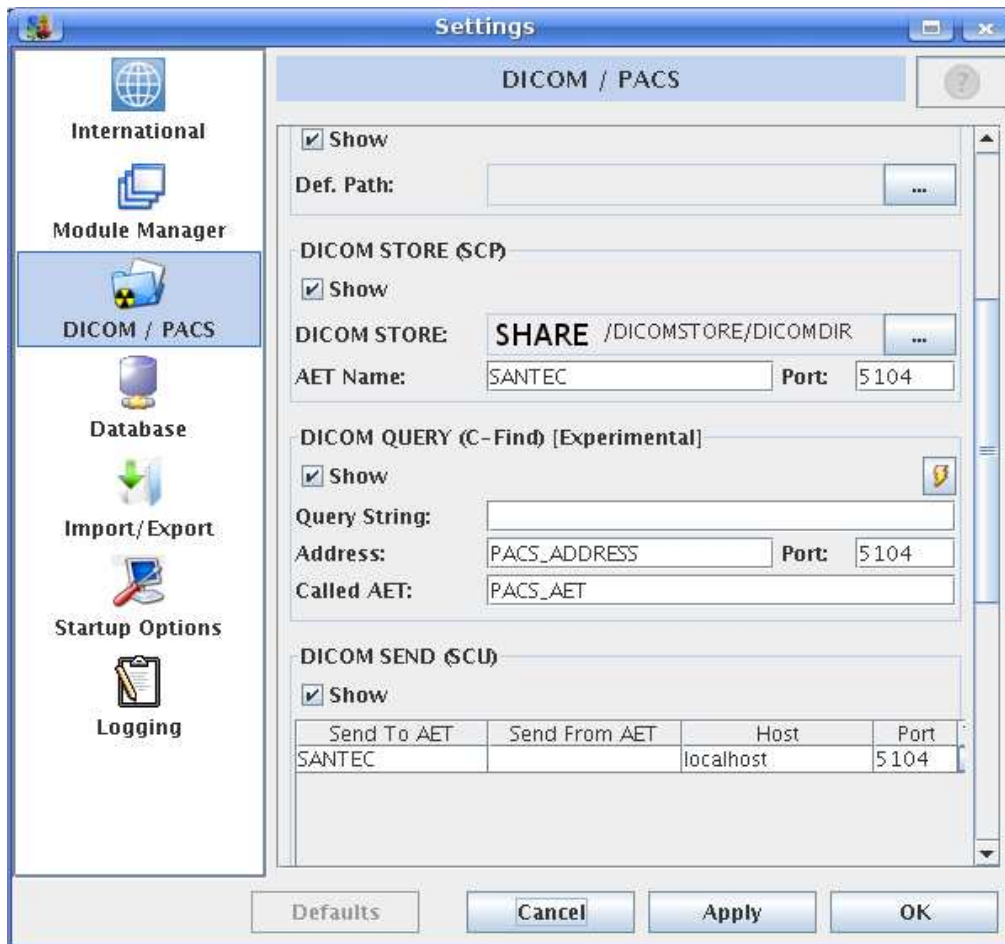
It is possible to run Optimage as a Dicomstore (to receive images from the PACS<sup>1</sup>) and database. This allows you to make a server-client installation. Due to the fact that Optimage was designed as a scientific standalone solution, **Optimage does not make any efforts to backup acquired data.**

---

<sup>1</sup>Picture Archiving and Communication System



1. A server with Java installed (>JRE2 1.5).
2. Create a shared folder for the 'DICOM Store' and one for the 'Optimage Client Software'.
3. Install the Optimage that should provide the database and the 'DICOM Store' in a different location than the client.  
Configure location where the 'DICOM store' should be stored.



The database has to be set up only if the internal database is not used. You also can set up a folder where export and imports will be stored.

1. Install Optimage in the client folder. During configuration, you have to set up the folder for the 'DICOM Store' to a existing path (e.g. O:\ on Windows Clients) be sure all Client Computers have mounted the same folder. To access Optimage's database the Client must configure the database connection as follows:

```
Database DSN: jdbc:hsqldb:hsq://OptimageServer/optimage
User: sa
Passord:
```

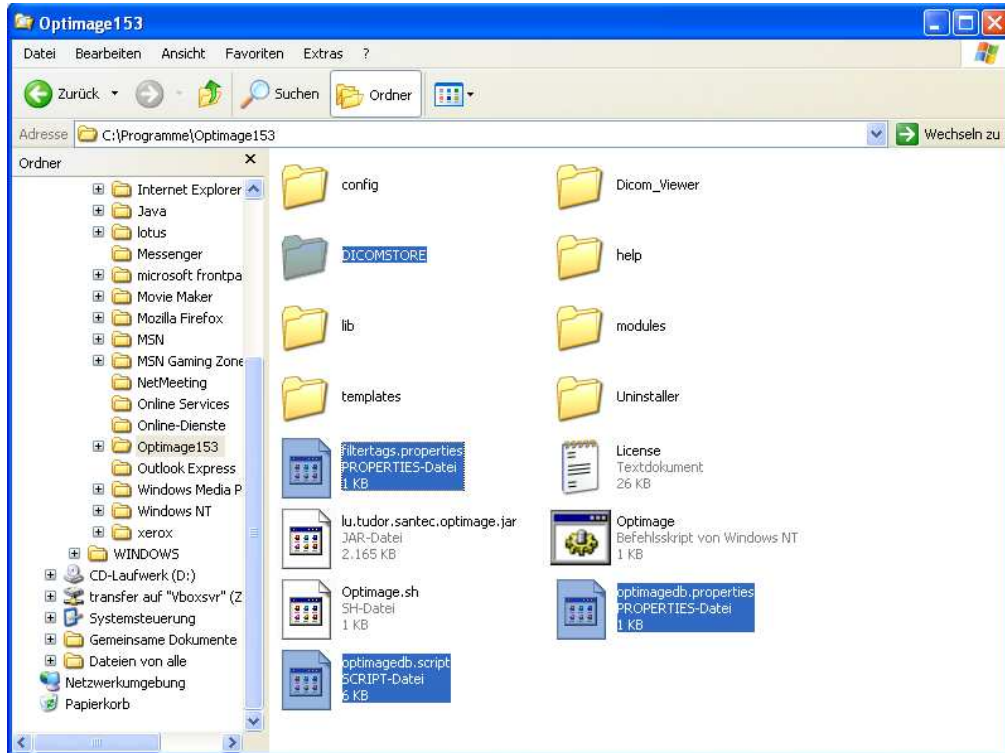
2. Add the server to your PACS<sup>1</sup> solution, to query for quality assurance images. Also don't forget to enter the PACS<sup>1</sup> address and AET<sup>2</sup> title in the Optimage settings.
3. Set up a direct 'DICOM send' on the tested machines to the 'Optimage Server'.
4. Set up mounting of the shared folders on the clients. And create a link to the 'Optimage Client Software'.
5. Start the 'Optimage Server' using the start up options.

## 1.3 Update

To update an Optimage installation, it is **strongly recommend to do a backup of the old Version**.

<sup>2</sup>Application Entity Title

1. Make a fresh installation of the new Version, e.g. call the folder OptimageXXX (XXX - Version Number without dots, 153 for the Version 1.5.3)
2. Copy the following files and folders into the new installation:
  - filtertags.properties
  - optimagedb.properties
  - optimagedb.script
  - DICOMSTORE



3. Then copy the settings.xml File from the config folder to the config folder of the new installation.

## 1.4 Update the DICOMSTORE

For unidentified reasons there are some problems loading images when reloading old results. There is one work-around to solve this.

1. stop Optimage.
2. rename the DICOMSTORE folder.
3. create a new DICOMSTORE folder.
4. start Optimage.
5. select the Dicom selector from the file open dialog.
6. the filter column has to be empty or filled with adequate filters. (You can delete them with a right click on the filter.)
7. then choose the folder where the original DICOMSTORE is located. See 2.
8. Now the column "Matching Files" should be filled. Select all the images.
9. Send the images to the local DICOMSTORE (send to PACS<sup>1</sup>).

## 1.5 Run Optimage as a service

The [JavaService](http://forge.ow2.org/projects/javaservice/)<sup>3</sup> provides the ability to start Optimage as a service. In this case Optimage runs without a GUI<sup>4</sup>. To use it properly you have to install Optimage twice, once as the server (service) and once as the client.

### 1.5.1 Server (Service) Configuration

You can use this Optimage to provide the database and the DICOM Store.

- use internal in this case
- set the checkbox to activate the DICOM Store. Share the *DICOMSTORE* folder over your network (using samba, smb, etc.)

To use JavaService orient on the following examples.

```
@echo off

@echo .
@echo . TestSampleService.bat - test JavaService executable using SampleService.jar
@echo .

setlocal
@rem note that if JVM not found, service 'does not report an error' when startup fails, although
event logged

set JVMDIR=C:\Programme\Java\jre1.5.0_19\bin\client

set JSBINDIR=C:\Java\JavaService-2.0.10
set JSEXE=%JSBINDIR%\JavaService.exe
set SSBINDIR=%JSBINDIR%
set OPTDIR=C:\Programme\Optimage172Server
```

#### Install a service

```
@echo Installing sample service... Press Control-C to abort
@pause
@echo .
%JSEXE% -install Optimage %JVMDIR%\jvm.dll
-Djava.class.path=C:\Programme\Optimage155rc\lu.tudor.santec.optimage.jar -Dcatalina.home={OPTDIR}
-Xms160M -Xmx320M -start lu.tudor.santec.optimage.Optimage -params p d -stop
lu.tudor.santec.optimage.Optimage -out %JSBINDIR%\stdout.log -err %JSBINDIR%\stderr.log -current
%OPTDIR% -description "Optimage Service"
@echo .
```

#### Start and stop the service via the net command.

```
net start|stop Optimage
```

#### Uninstall the service

```
@echo Un-installing sample service... Press Control-C to abort
@pause
@echo .
%JSEXE% -uninstall Optimage
@echo .
```

Be sure to replace all folders by your requirements.

<sup>3</sup><http://forge.ow2.org/projects/javaservice/>

<sup>4</sup>Graphical User Interface

## 1.6 Startup Options

Here you can define the amount of memory for Optimage, you can define options for the Java Virtual Maschine and Optimage itself.

Parameter	Optimage startup options
h	prints the help
p	Starts Optimage without GUI <sup>5</sup> as a DICOMstore
x	Stops a running Optimage DICOMstore
d	Starts Optimage without GUI <sup>1</sup> as a database
q	Stops a running Optimage database

Optimage startup options can also be combined, e.g. -pd starts Optimage without GUI<sup>1</sup> as DICOMstore and database.

